



Sunnyvale Middle School 2-Story Classroom Building

Town Hall
2/6/24

agenda

- Measure C Bond
 - Introduction from Dr. Gallagher
- Team Introductions
 - Design Team
 - Steering Committee
- A Look Back
 - Facility Master Plan
 - Team Selection
 - Project Requirements & Vision
- Project Overview and Scope of Work
 - Project Scope
 - Schedule
 - Educational Partner Engagement & Process
- Folia Building Design
- Site Design
- Thank You + Q&A



Sunnyvale School District 2024 School Bond





Sunnyvale School District Bond - Measure C

On Tuesday, March 5, 2024, all of the voters in the Sunnyvale School District will have an opportunity to vote on Measure C, a \$214 million school bond.

Measure C will provide funds to:

- Fix or replace leaky roofs and windows
- Improve accessibility for students with disabilities
- Expand counseling facilities to support the mental health of students
- Update classrooms, science labs and technology to meet current instructional standards
- Upgrade and improve school safety and security
- Modernize Sunnyvale Middle School

The average yearly cost to property owners in the Sunnyvale School District will be \$15 per \$100,000 of assessed valuation (not market value). (Eg. Approximately \$75 for a \$500,000 home.)

March 5, 2024 Election

- **Measure C approval requires 55% yes vote**
- **The last day to register to vote for the March 5, 2024, Presidential Primary Election is February 20, 2024.**
- **Your county elections office will begin mailing ballots by February 5, 2024.**
- **Vote-by-mail ballots can be returned by mail, at a drop-off location, or your county elections office.**
- **Vote-by-mail ballots must be postmarked on or before Election Day and received by March 12, 2024.**
- **Go to sccvote.sccgov.org to learn more about how to turn in mail in ballots or how to vote in person.**





project team



Brandt Burns
Director, Facilities
& Operations



Amber Emery
Project Director



Helen Pierce
Principal, Design
Director



Aaron Jobson
Principal / CEO /
President



Myron Kong
Capital Projects
Manager



Ryan Holman
Senior Project
Manager



Maria Madrigal
Project Manager



Lyanne Schuster
Principal / Studio
Lead

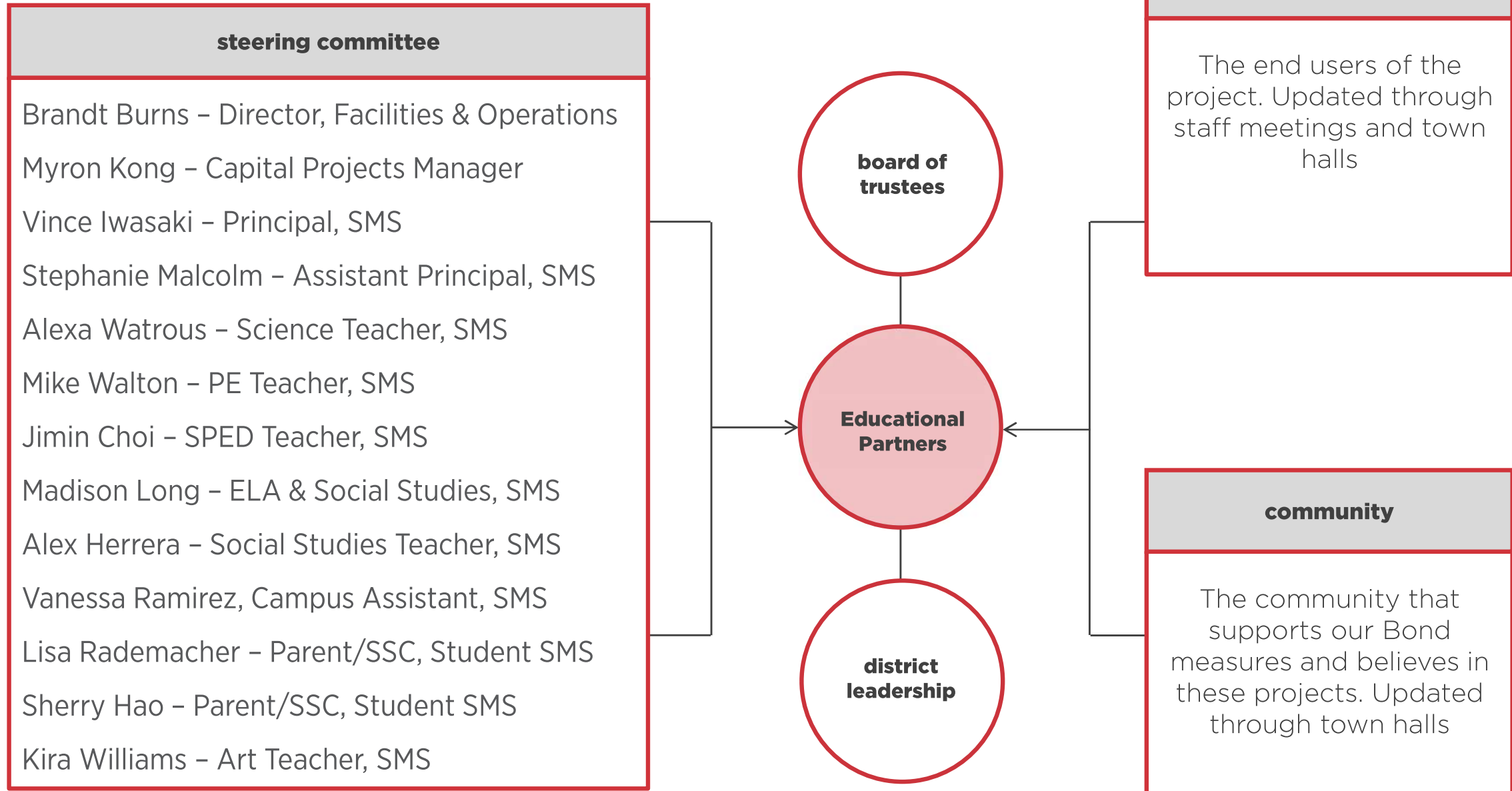


Lance Hunter
Project Landscape
Designer



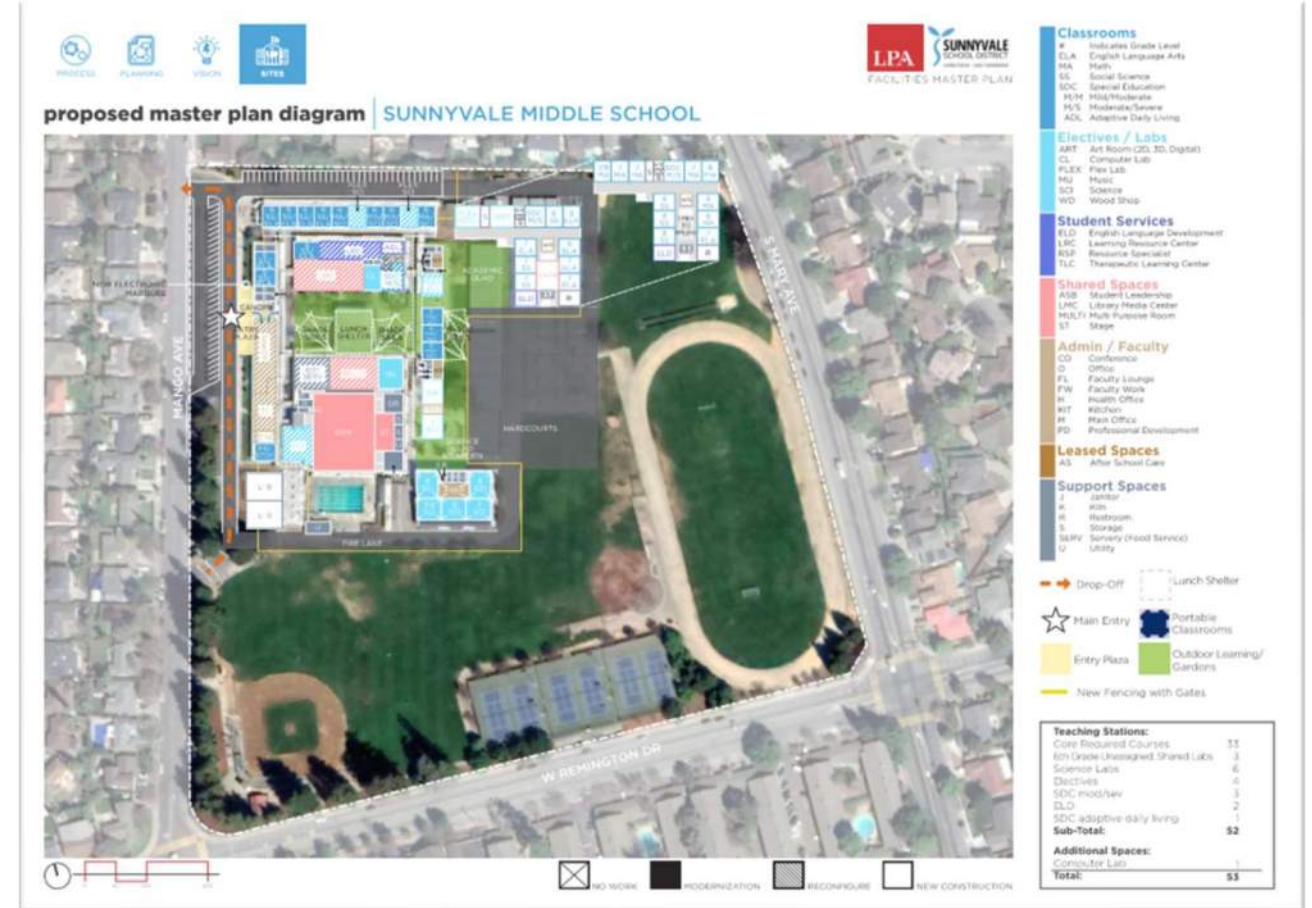
Olivia Asuncion
Project Architect

educational partners



the process

- Adoption of the Facility Master Plan
- Architect Selection
- General Contractor Selection
- Collaboration with the City of Sunnyvale (Open Space)



the why behind this project

Our Mission: Sunnyvale School District provides every student with a strong foundation of academic, behavioral, and social-emotional skills to prepare them for success in a diverse, challenging and changing world.

Our Vision: Each school in the Sunnyvale School District will be known for developing global-minded learners by providing an exemplary education for every student, building on individual strengths, embracing diversity, and fostering community responsibility.

California School Facilities Research Institute

The Physical Environment - physical condition of school facilities significantly affects engagement

Classroom Size and Layout - flexible classroom layouts create collaborative learning opportunities

Comfort and Climate - proper HVAC are essential for conducive learning environments

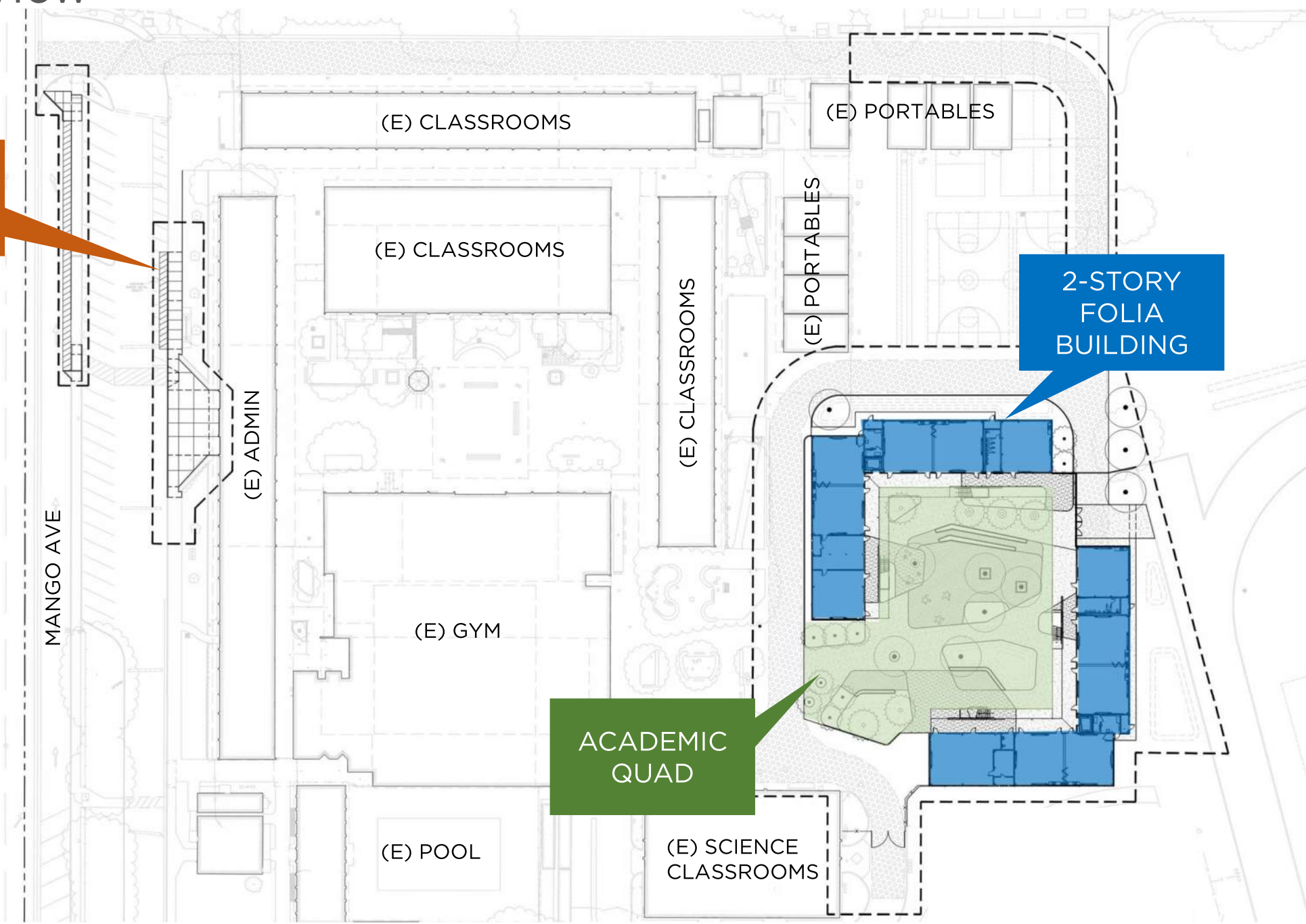
Natural Light - is linked to improved attentiveness and overall well-being

Outdoor Spaces – green outdoor space have a significant positive impact on health and academic achievement

project overview




- Construct a 2-Story Classroom Building
- Create an Academic Quad
- Complete ADA Upgrades
- Minimize Campus Disruption

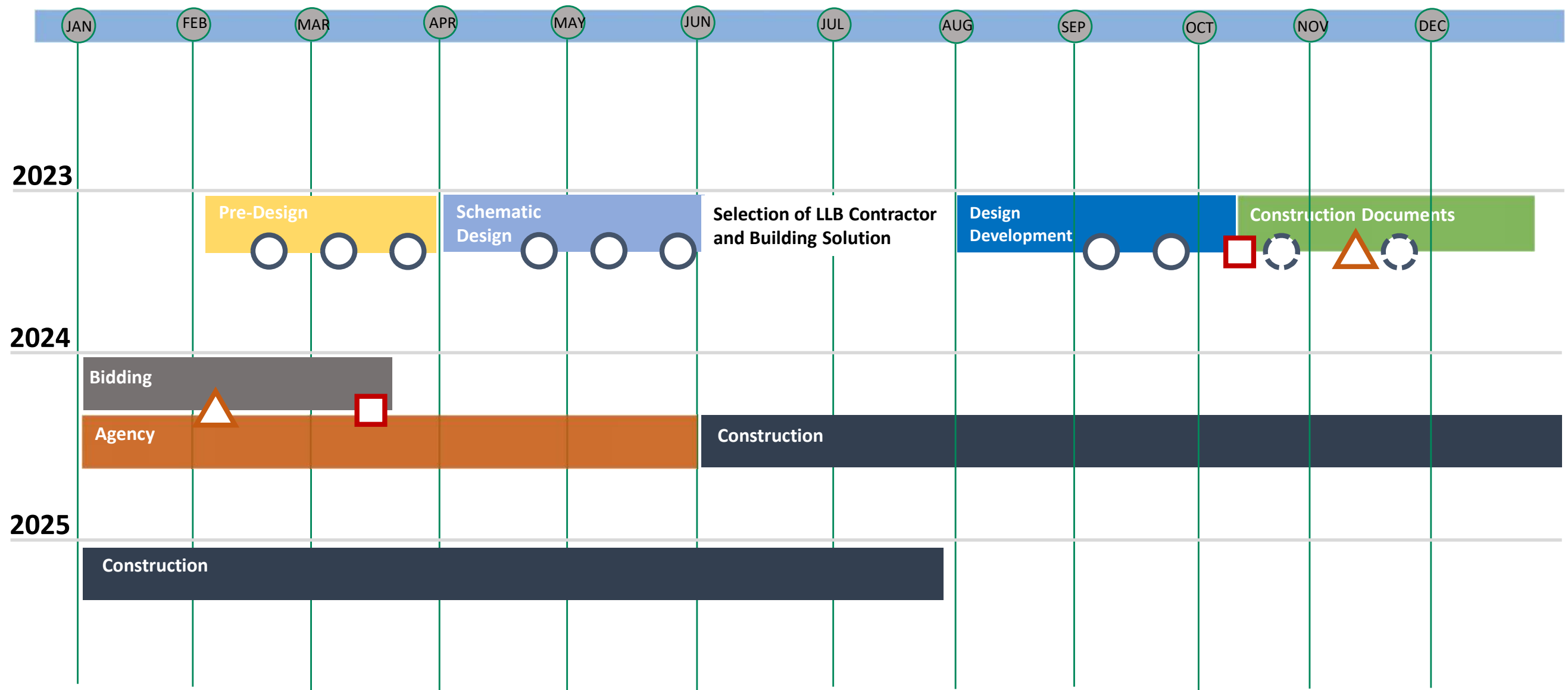
PATH OF TRAVEL
IMPROVEMENTS





schedule

-  SSC Meeting / Focus Group
-  Board of Education
-  Community Forum

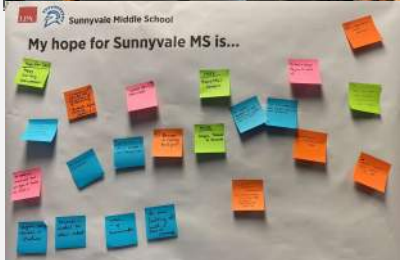


educational partner engagement & process

-Conducted (3) SSC meetings to determine:

- Visioning and project goals
- Site and building programming
- Building siting

-Determination of scope, budget, and schedule



pre
design

-Conducted (3) SSC meetings to determine:

- Overall design intent
- Spatial characteristics
- Finalize program

-District conducted LLB interviews and selected Blach Construction and Folia building



schematic
design

-Continuation of SSC meetings and focus group meetings to determine:

- Final design
- Material selection

-Board of Education update



design
development

-Will be conducting:

- Continuation of SSC meetings
- Staff Update Meeting
- Community Forum (11/2023)

-Finalizing of documents for DSA submittal

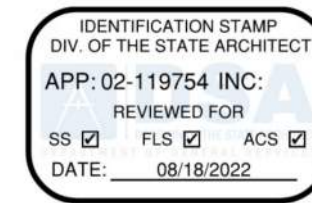


construction
documents

-DSA Submittal 12/2023

-Bidding starting 01/2024

-GMP Board approval Spring 2024



Contractor #1	Contractor #2	Contractor #3	Contractor #4	Contractor #5
\$ 3,075,000.00	\$ 3,130,715.00	\$ 3,255,194.00	\$ 3,285,000.00	\$ 3,479,870.00
\$ 155.68	\$ 158.90	\$ 164.80	\$ 166.31	\$ 176.18
34 Weeks	34 Weeks	35 Weeks	36 Weeks	24 Weeks
\$ 6,592.00	\$ 274,936.00	\$ 230,786.00	\$ 246,445.34	\$ 227,776.00
\$ 131,712.00	\$ 108,777.00	\$ 143,801.53	\$ 171,150.00	\$ 172,620.00
\$ 10,013.00	\$ 741,440.00	\$ 660,814.00	\$ 722,900.00	\$ 662,000.00
\$ 21,824.00	\$ 2,900.00	\$ 2,655.00	\$ 375,374.00	\$ 541,050.00
\$ 372,493.00	\$ 381,673.00	\$ 437,873.73	\$ 84,814.00	
\$ 68,385.00	\$ 18,500.00			
\$ 21,000.00				
\$ 6,636.00		\$ 4,938.00	\$ 28,370.00	
\$ 22,000.00	\$ 40,188.00			
\$ 236,544.00	\$ 271,450.00	\$ 226,993.00	\$ 287,258.00	
\$ 214,476.00	\$ 182,953.00	\$ 184,800.00	\$ 187,474.00	\$ 202,130.00

permitting
bidding/awarding

-Project built by Blach Construction

-Completion 07/2025



construction

logistics plan

SECONDARY
CONSTRUCTION
ZONE
SUMMER 2024

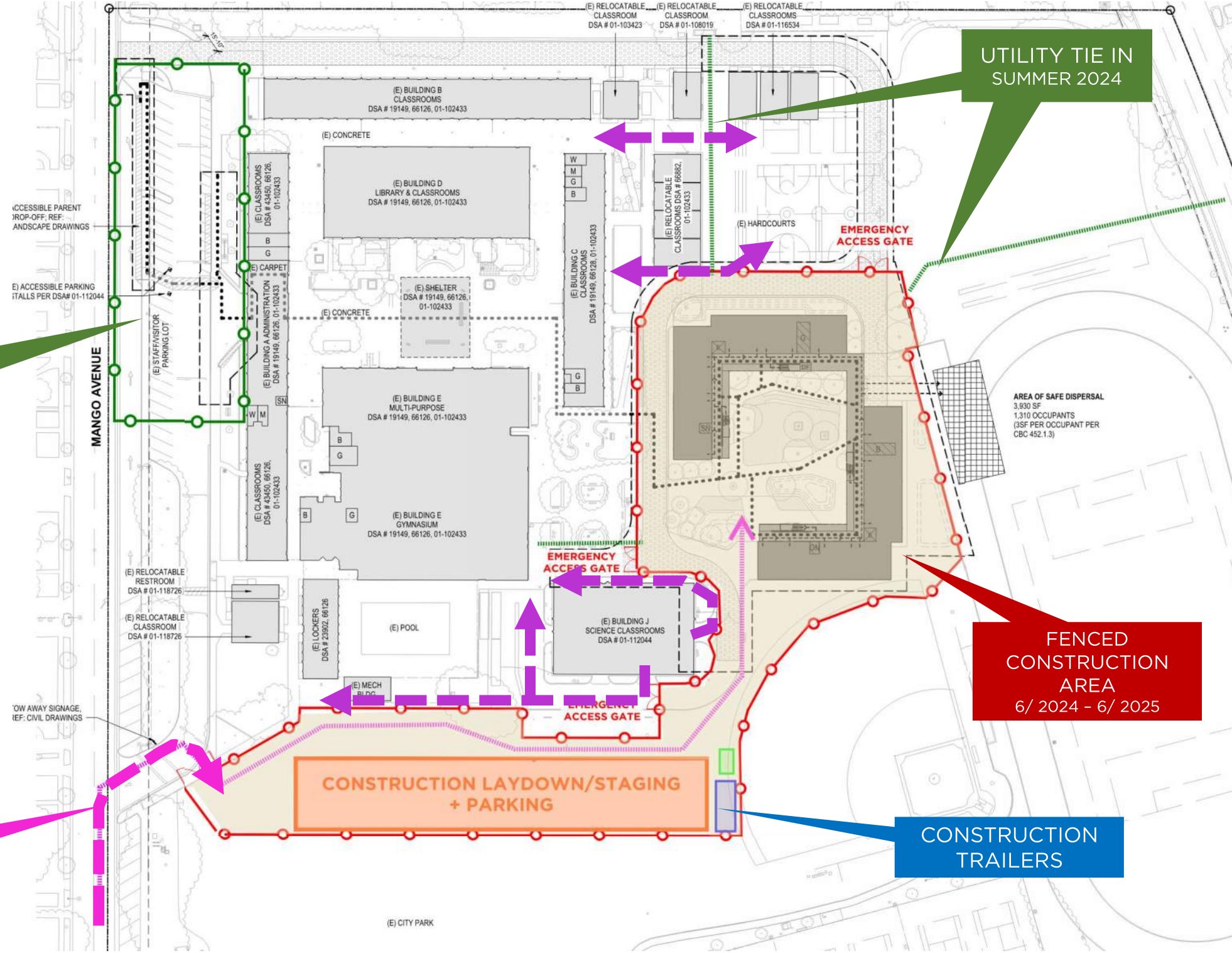
PEDESTRIAN ACCESS
CONSTRUCTION ENTRANCE

CONSTRUCTION
ENTRANCE

CONSTRUCTION
TRAILERS

UTILITY TIE IN
SUMMER 2024

FENCED
CONSTRUCTION
AREA
6/ 2024 - 6/ 2025





building design concept

folia overview



- HIGH-PERFORMANCE BUILDING ENVELOPE
- OPTIONAL SOLAR PANELS
- CLERESTORY WINDOWS
- LED LIGHTING
- EFFICIENT HVAC SYSTEM & NATURAL VENTILATION
- LARGE WINDOWS WITH SUNSHADES
- STEEL & CONCRETE FLOORS
- INTEGRATED AV & TECHNOLOGY

- STEEL STRUCTURE
- CEMENT PLASTER
- METAL ROOF
- STAINLESS STEEL RAILING SYSTEM
- PATENT-PENDING WALL CONNECTION SYSTEM
- TIE-OFF POINTS
- ALUMINUM WINDOWS AND DOORS

High Performance



Low Maintenance





exterior view examples



Cupertino HS Aerial View



Cupertino HS Connecting Walkway



Cupertino HS Exterior View of Curtain Wall



exterior view examples



Fremont High School Ed Ops Building





Floor Plans



FIRST FLOOR PLAN



SECOND FLOOR PLAN

LEGEND

- CLASSROOM
- STAFF COLLABORATION
- STUDENT COLLABORATION
- ART CLASSROOM (W/ STORAGE + KILN)
- RESTROOMS/CUSTODIAL
- ELEVATOR
- SERVICE



Floor Plans



FIRST FLOOR PLAN



SECOND FLOOR PLAN

LEGEND

- CLASSROOM
- STAFF COLLABORATION
- STUDENT COLLABORATION
- ART CLASSROOM (W/ STORAGE + KILN)
- RESTROOMS/CUSTODIAL
- ELEVATOR
- SERVICE



Cupertino HS Second Floor Classroom



Fremont HS Educational Options Building Second Floor Classroom



Cupertino HS First Floor Classroom



Typical Classroom



Open Bookshelves w/ Storage Cabinets Below

Wall Mounted Whiteboards

Tackable Panel

Wall Mounted LCD Monitor

Tall Teacher Storage Cabinets

Wall Mounted Whiteboard

Lockable Upper/Lower Casework w/ Sink



FIRST FLOOR PLAN



LEGEND

-  CLASSROOM
-  STAFF COLLABORATION
-  STUDENT COLLABORATION
-  **ART CLASSROOM (W/ STORAGE + KILN)**
-  RESTROOMS/CUSTODIAL
-  ELEVATOR
-  SERVICE



Fremont HS Ed Ops Building Science Classroom



Cupertino HS Science Classroom

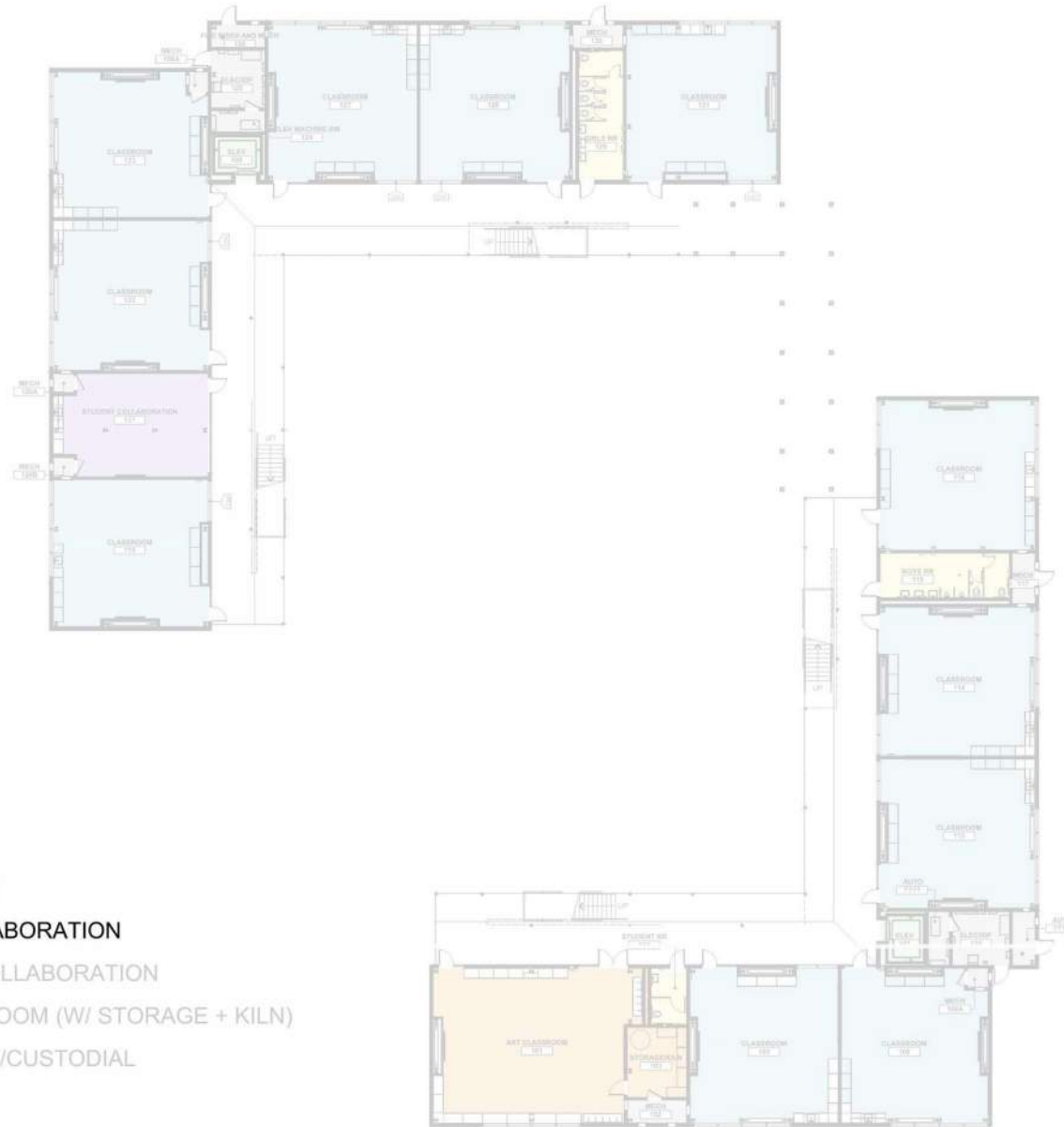


Art Classroom





Floor Plans



FIRST FLOOR PLAN



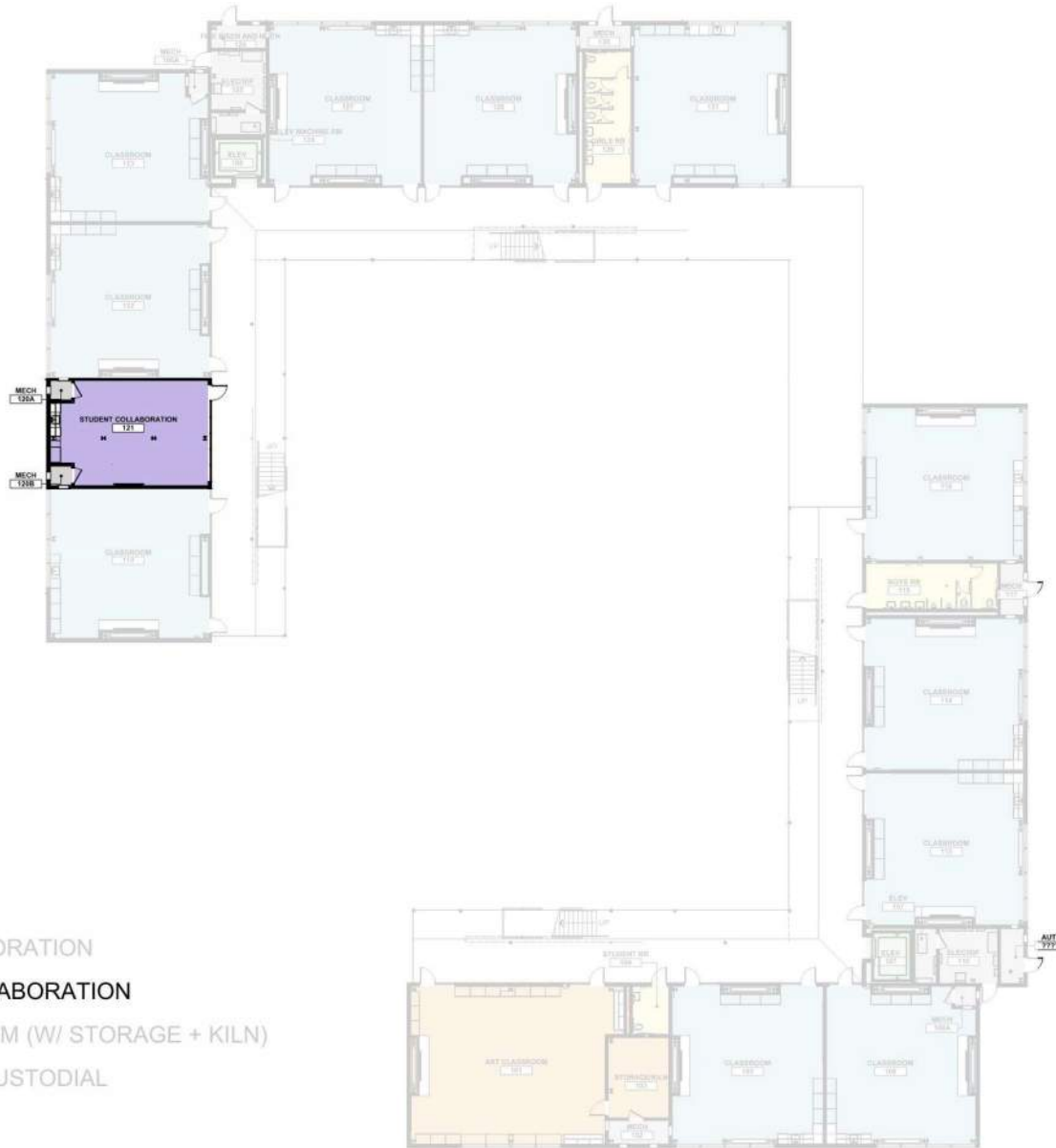
SECOND FLOOR PLAN

LEGEND

- CLASSROOM
- STAFF COLLABORATION
- STUDENT COLLABORATION
- ART CLASSROOM (W/ STORAGE + KILN)
- RESTROOMS/CUSTODIAL
- ELEVATOR
- SERVICE



Floor Plans



FIRST FLOOR PLAN



SECOND FLOOR PLAN

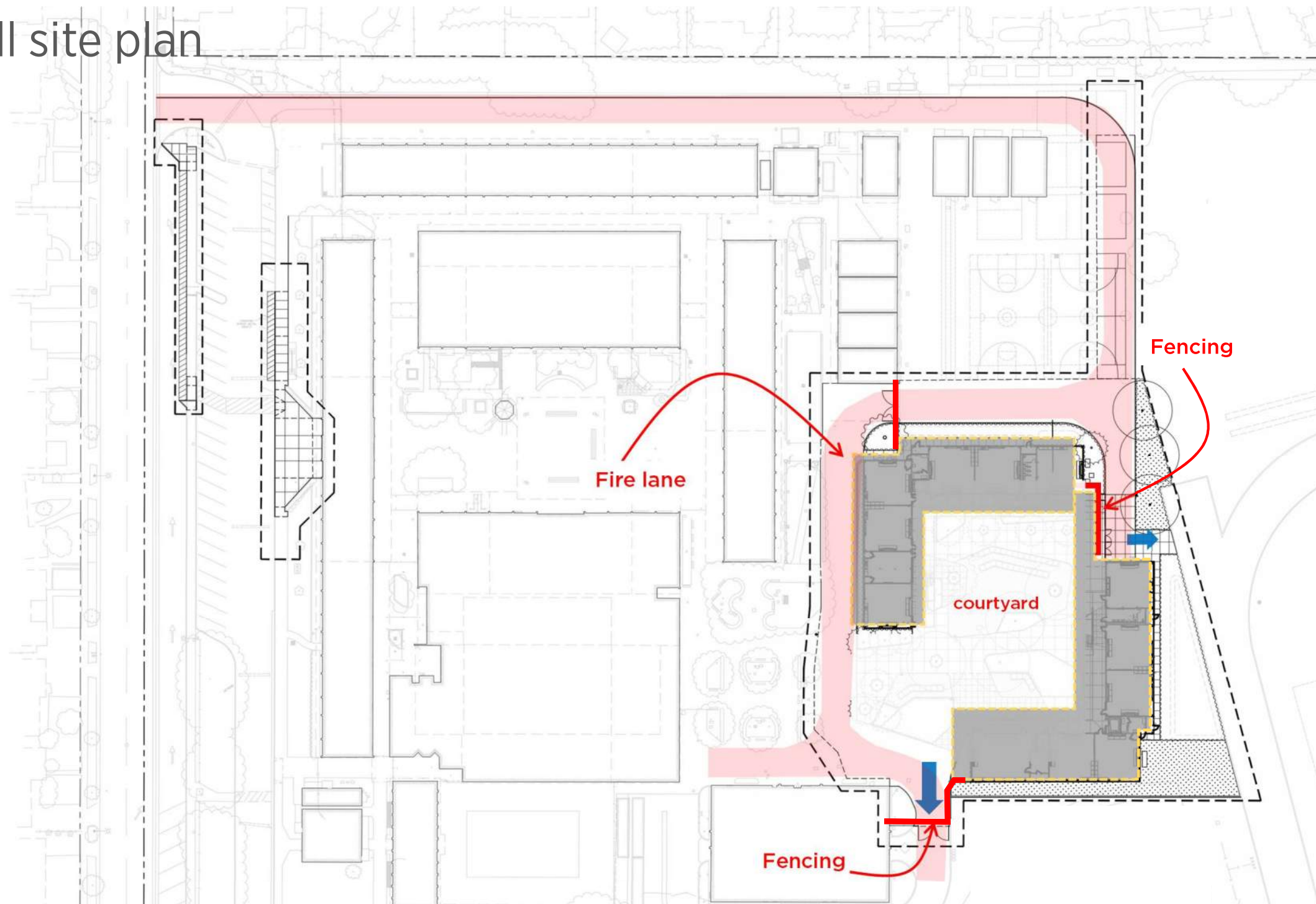
LEGEND

- CLASSROOM
- STAFF COLLABORATION
- STUDENT COLLABORATION
- ART CLASSROOM (W/ STORAGE + KILN)
- RESTROOMS/CUSTODIAL
- ELEVATOR
- SERVICE

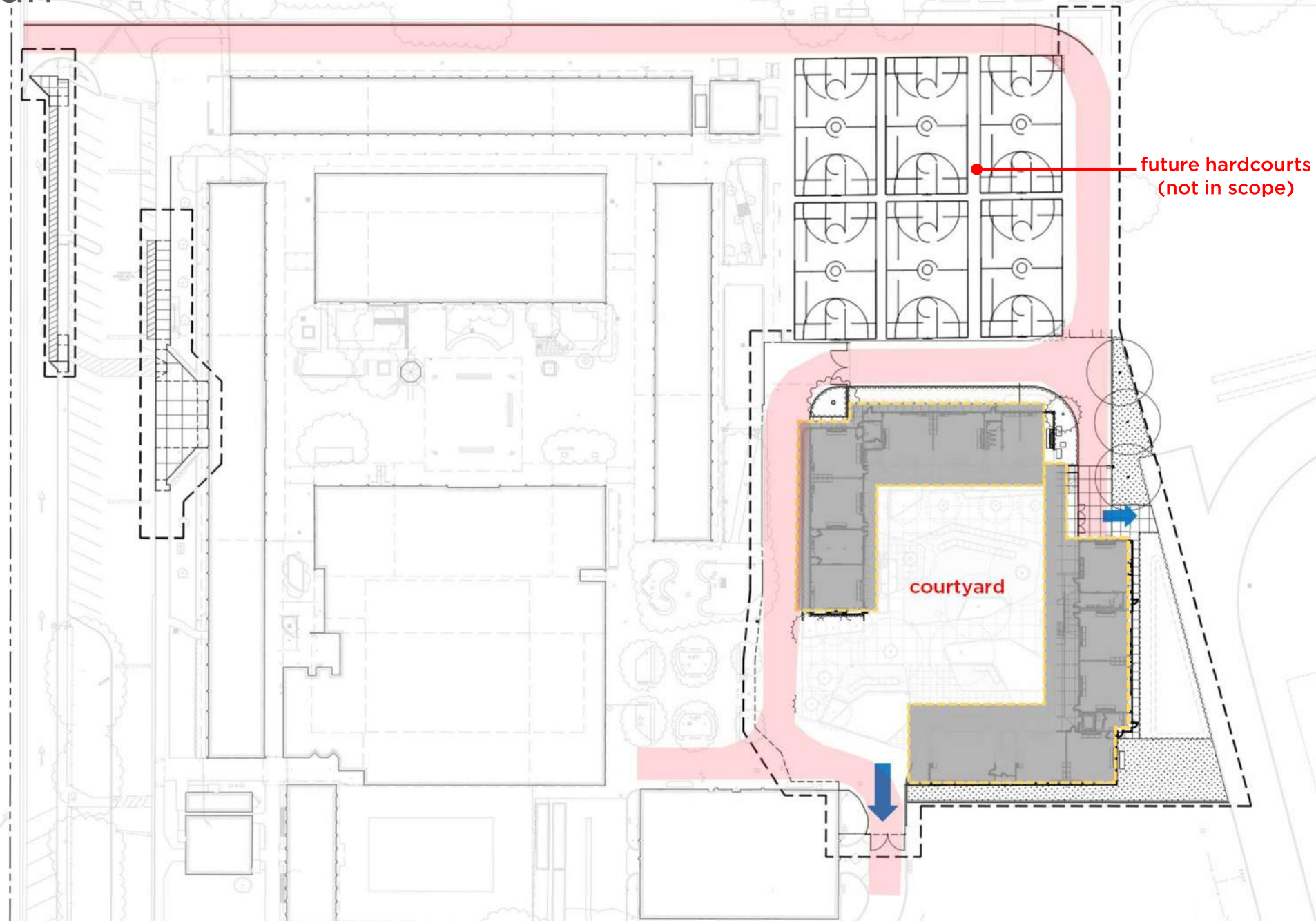
site design concept



overall site plan

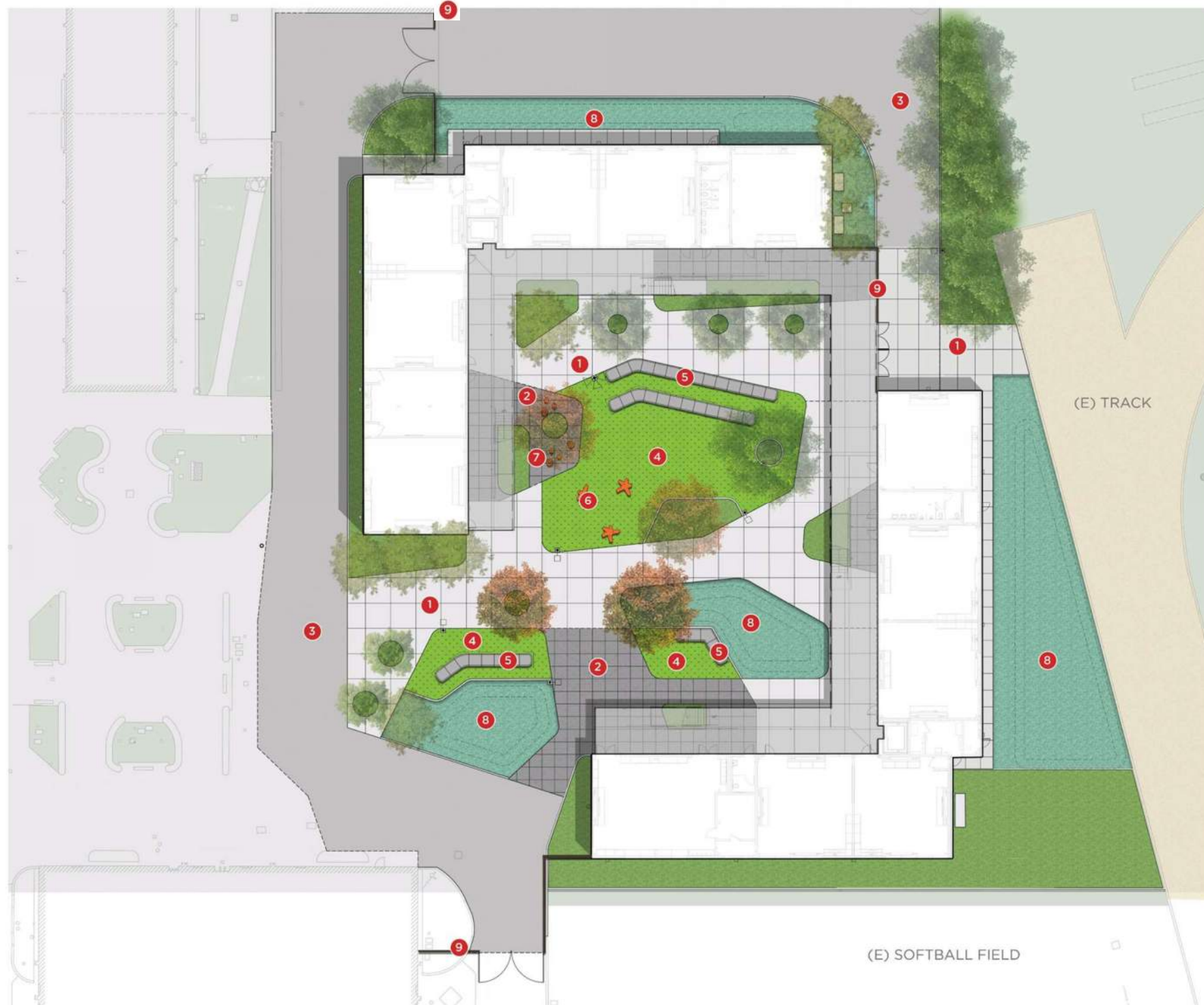


- When portables are removed, six basketball courts can be accommodated in hardcourt area



LEGEND

- 1 CONCRETE PAVING - NATURAL GRAY
- 2 CONCRETE PAVING - TOPCAST
- 3 AC PAVING
- 4 SYNTHETIC TURF
- 5 PRECAST SEATWALLS
- 6 PRECAST SEATING FURNITURE
- 7 OUTDOOR LEARNING AREA
- 8 STORM WATER BASIN
- 9 CHAIN LINK FENCE & GATE





Amphitheater / Synthetic turf



Outdoor learning space



Respite



Garden



Bioretention basin Planting



LARGE
GROUP
SPACE

Large space allows greater opportunity for physical movement and exploration and interpersonal connections.

MEDIUM
GROUP
SPACE

Breakout spaces for hands-on-learning support social interaction, teamwork and multiple different learning styles .

SMALL
GROUP
SPACE

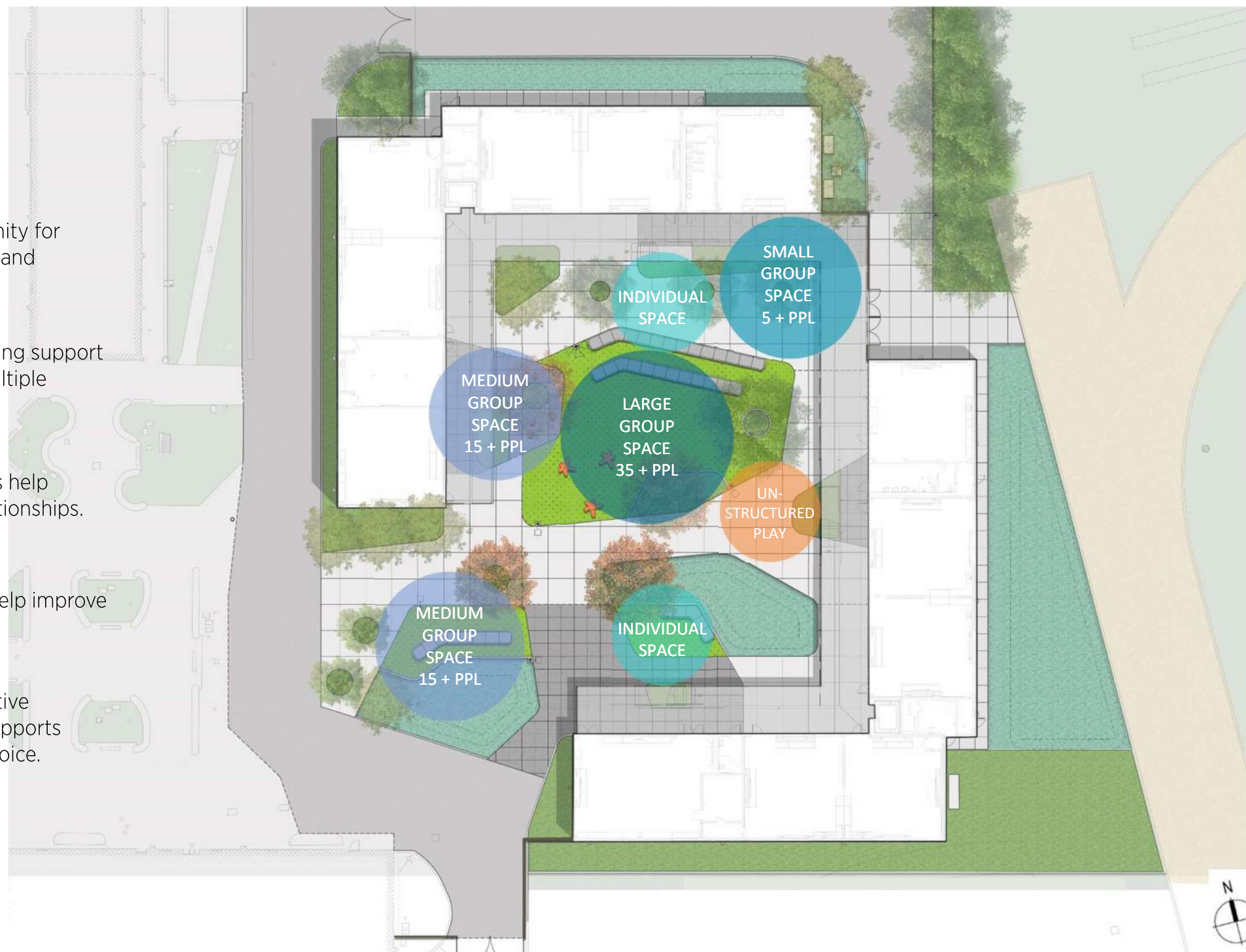
Self-guided group discussion spaces help strengthen direct, interpersonal relationships.

INDIVIDUAL
SPACE

Places to slow down and recharge help improve impulse control and self-regulation

UN-
STRUCTURED
PLAY

Encourages problem-solving, executive functioning and imaginative play. Supports social interaction and freedom of choice.









MARCH/SEPTEMBER 10AM



JUNE 10AM



DECEMBER 10AM



MARCH/SEPTEMBER 12PM



JUNE 12PM



DECEMBER 12PM



MARCH/SEPTEMBER 2PM



JUNE 2PM



DECEMBER 2PM



Bioretention Basin Planting



Planting Materials



California Meadow Sedge



Berkeley Sedge



Dwarf Mat Rush



Spreading rush



Festuca rubra 'Molate'



Douglas Iris



Hummingbird Sage



Canyon Prince Wild Rye Leymus



Deer grass



Blue Spike Sage



*Thank you for your
support!*

- Project Funded from Bond Measure GG
- Made possible because of our community and your investment into Sunnyvale SD



questions and feedback



Changing Lives by Design™



QUATTROCCHI KWOK
ARCHITECTS

